

# Come join us in the creation



Draft impression of immersive sea scape

# Sea is Sinking

The Sea is Sinking is an interactive immersive installation of an imagined underwater environment, inspired by Port Phillip Bay's marine ecosystems.

The participants will create inter-connecting aquariums of marine ecosystems.

The artistic works are formed from a limited pallet of sustainable and environmentally friendly materials.



# Sea is Sinking elements

## The installation

- The interconnecting aquariums (non interactive)
- Seaweed (non interactive)(used as walking guide)
- The netting and fish tales (interactive) (used as walking guide)
- The corals reborn (interactive)
- Puppets and Shadow puppets ( possibly interactive)
- Crankies (interactive)
- Animation and film for drop down projector
- Corals reborn (interactive)



# Inter-connecting Aquariums

Inter-connecting Aquariums are imagined underwater worlds/landscapes inspired by Port Phillip bay.

## Main component – ie size and mass

- Boxes on top of each other each displaying an underwater world
- Pods– creating a column of a sea scape
- Seaweed (non interactive)(used as walking guide)
- The netting and fish tales (interactive) (used as walking guide)

## Lesser components – interaction may need attendants

- Crankies showing the story in a scroll format
- Puppets such as Shadow puppets
- The world is your oyster you may come up with your own unique idea/form – to be discussed with Curator Fern Smith – concept -risk assessment and materials used.



# Getting to know your environment

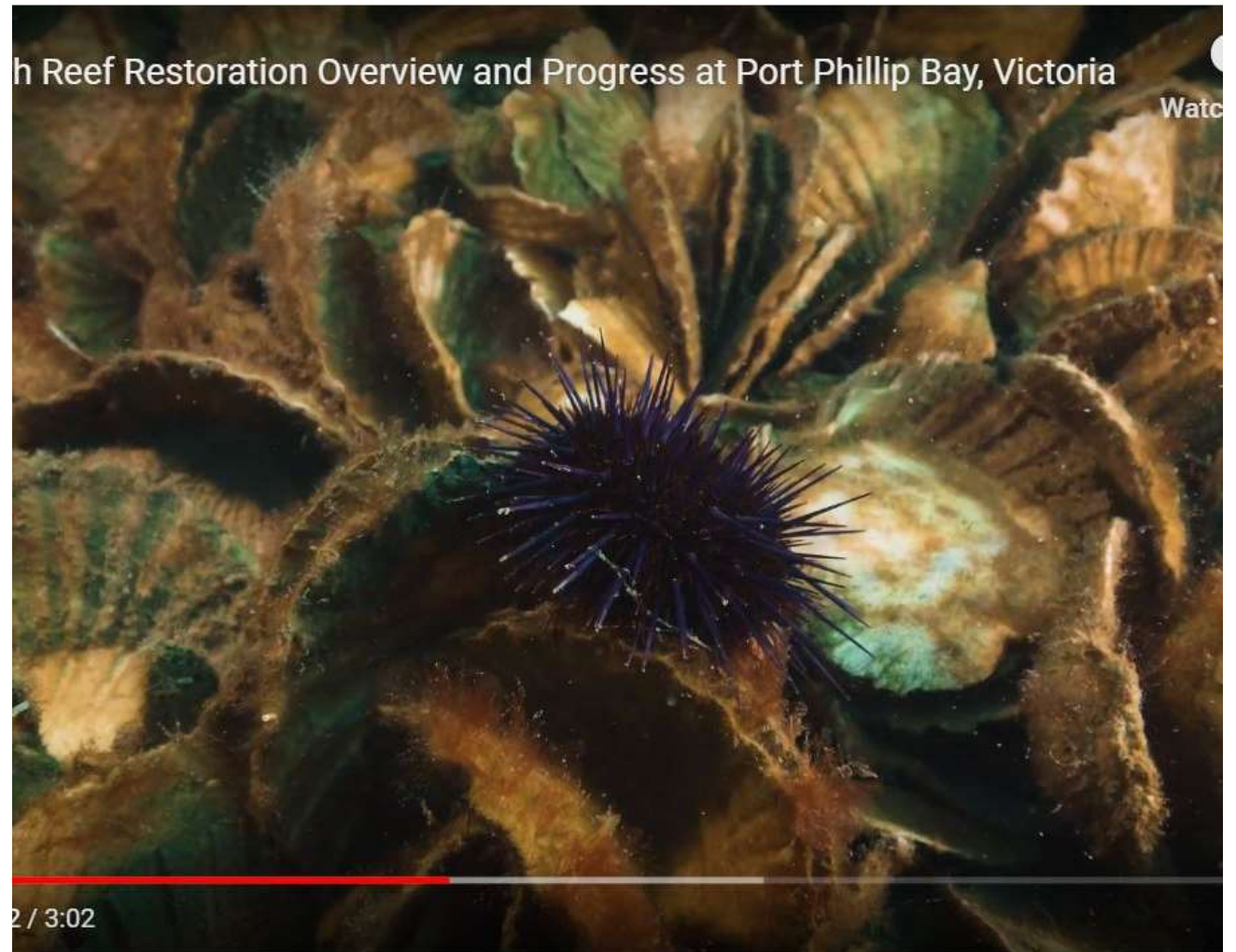
## Resources

<http://portphillipmarinelife.net.au/>

<https://www.natureaustralia.org.au/>

<https://museumsvictoria.com.au/>

Just type in Port Phillip Bay in their search area

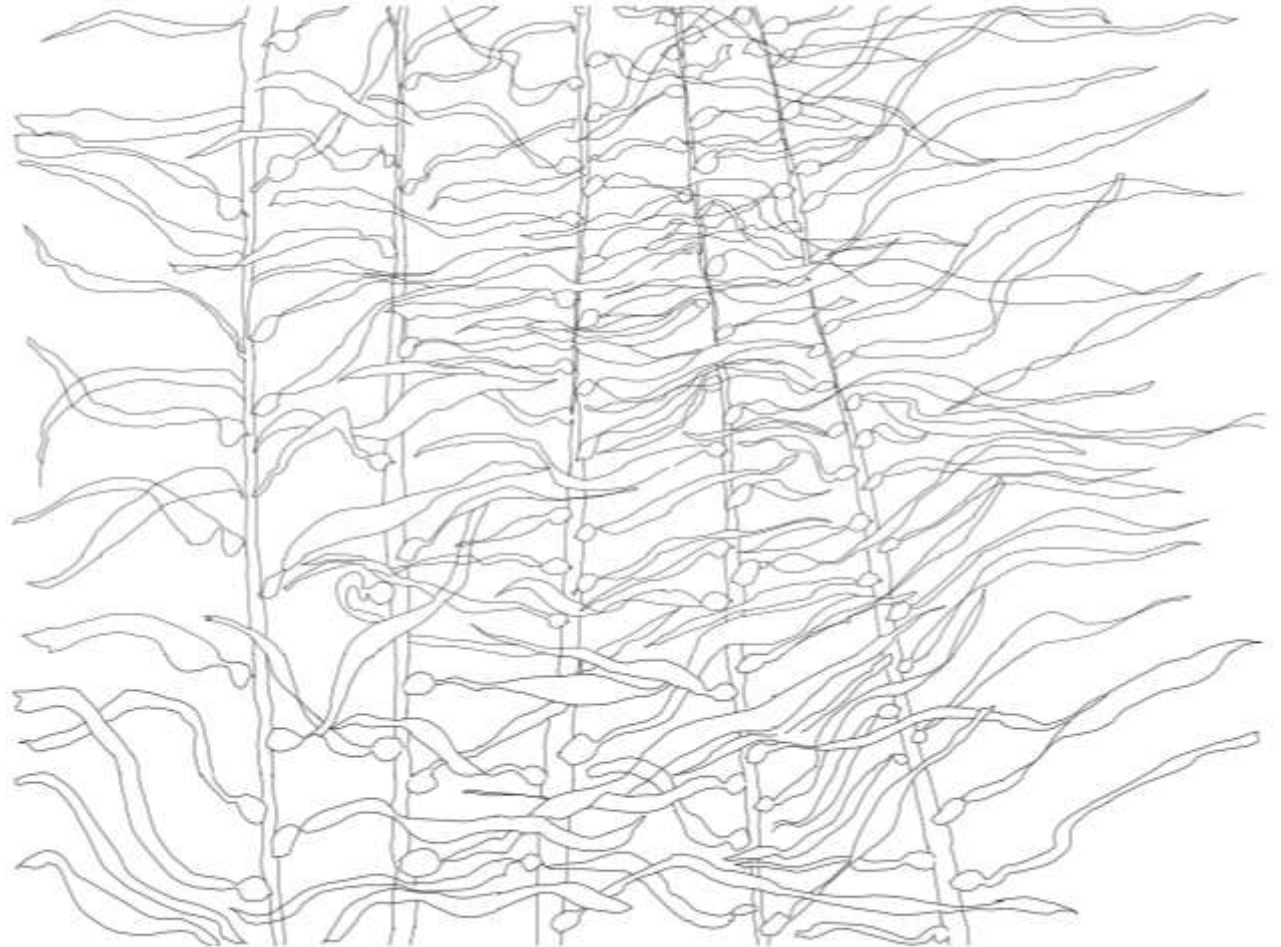


# *We would like **you** to be part of this exciting project*

*The Sea is Sinking* is an interactive immersive installation of an imagined underwater environment. Created from environmentally considered materials. No experience necessary, just raw enthusiasm, we are looking for

- makers and shakers
- artists and creators
- sound and music
- word and poetry
- attendants and hosts
- sponsors and donors
- animation and film
- Installation helpers and much more...

I am sure you have a talent hiding waiting to be explored. When participating your name will be added to the list of creators.



# Register your interest

Register your interest with Fern Smith, curator.

Contact: Fern Smith, curator

Text your name and number to 0408978747

Updates and registration form: [fernartz.com](http://fernartz.com)

**Interested parties to date:** Moomba Park Primary School, Reynard St, East Coburg, Newlands, Brunswick and Sussex Neighbourhood Houses of Moreland. Interested artists to date are: Maggie Cowling, Youbi Lee, Margaret Cowling and Fern Smith. (love to see your name here!)

